



**OCCUPATIONAL HAZARDS COVERED BY MSP**

**A. Chemicals (not all-inclusive)**

- 2-Acetylaminoflourene
- Acrylonitrile
- 4-Aminodiphenyl
- Arsenic-Inorganic
- Asbestos
- Benzene
- Benzidine
- 1,3-Butadiene
- Cadmium
- Bis (2-ChloroMethyl) Ether
- 1,2-Dibromo-3-Chloropropane
- 3,3'-Dichlorobenzidine
- 4-Dimethylaminoazo Benzene
- Ethylene Oxide
- Ethyleneimine
- Formaldehyde
- Lead
- 4,4'-Methylene Dianiline
- Methyl Chlortomethyl Ether
- Methylene Chloride
- alpha-Naphtylamine
- beta-Naphtylamine
- 4-Nitrobiphenyl
- N-Nitrosodimethylamine
- beta-Propiolactone
- Chromic Acid
- Vinyl Chloride
- Coke Oven Emissions

**B. Bloodborne Pathogens**

Occupational exposure to blood or blood products including but not limited to, HIV and Hepatitis B virus.

**C. Noise**

**D. Infectious Agents**

- a. Any substance which is infectious to humans and/or other animals (including but not limited to: bacteria, viruses, fungi and toxins).
- b. Any type of genetically modified mircoorganism.
- c. Any diagnostic specimens and clinical and medical wastes associated with them.

**E. Work with Animals**

**F. Work with Radioactive Materials (Bio-assays)**

**G. Dive Physicals**

**H. Eye Examination – Laser Safety Program**



**FIU**

FLORIDA INTERNATIONAL UNIVERSITY  
*Miami's public research university*

**Program Guidelines**

**MEDICAL SURVEILLANCE PROGRAM**



**Florida International University**

*Environmental Health & Safety & Risk Management Services*

Phone: 305.348.2621 • Fax: 305.348.3574 • [www.fiu.edu/~ehs](http://www.fiu.edu/~ehs)

**Biosafety Office: 305.348.3387**

## MEDICAL SURVEILLANCE PROGRAM OVERVIEW

The FIU Medical Surveillance and Occupational Monitoring Program (MSP) is intended to assure that University employees, particularly researchers, are afforded the opportunity to identify potentially hazardous exposures and modify research or work practices and procedures which could compromise their health. The MSP provides for initial, emergency, periodic or post-assignment medical evaluation of individuals who work with, or plan to work with listed materials/agents.

The MSP is fully endorsed by the FIU administration, which is committed to the well-being of University researchers and staff, and to full compliance with the legal requirements that drive the scope of this program. However, the success of the program is contingent on everyone fulfilling their responsibilities in a timely and conscientious manner.

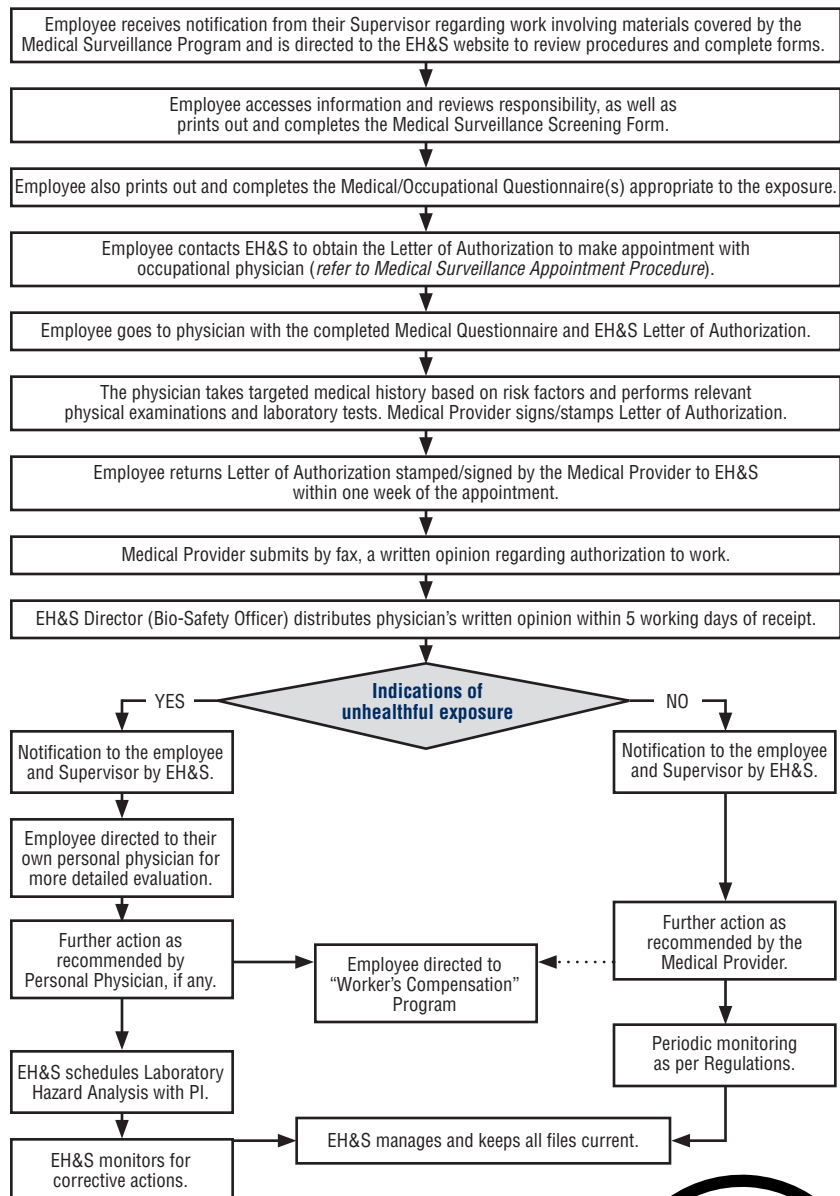
A list of the agents/exposures covered under the MSP is available at: [http://www.fiu.edu/~ehs/med\\_surv/medsurv/home.htm](http://www.fiu.edu/~ehs/med_surv/medsurv/home.htm) (a partial list is printed on the back of this pamphlet).

### Medical Surveillance Program Responsibilities:

- *The Vice President of Research* provides executive support and leadership in assuring compliance with program requirements.
- *Deans, Directors and Chairpersons* support compliance efforts through budgetary and accountability standards that apply to eligible members of their unit participating in the Medical Surveillance Program.
- *The Department of Environmental Health & Safety (EH&S)* coordinates procedures for compliance to meet regulatory requirements and "customer-focused" service to the participants in the program.
- EH&S facilitates the process, however, *each Department* is responsible for all medical costs incurred (i.e., exams, tests, lab work and follow-up visits)
- *Supervisors* must determine the risks/hazards of various materials/agents and the compliance procedures applicable to the use of such materials/agents.
- Once an employee has been identified as eligible for MSP participation, their *Supervisor* is required to make them aware of their responsibilities, as well as provide them with all applicable hazardous agent fact sheets, and direct them to the EH&S website for the program's procedural flowchart: [http://www.fiu.edu/~ehs/med\\_surv/surv\\_proc.pdf](http://www.fiu.edu/~ehs/med_surv/surv_proc.pdf).
- *Supervisors* who work with hazardous agents must participate in the Medical Surveillance Program as well.
- *Supervisors* must sign employees' completed Medical Surveillance Screening Forms before they are submitted to EH&S.
- *Everyone* participating in the program must comply with procedures and participate in required training.

The word "Supervisor", as used above, includes Principal Investigators (PI) and Project Managers.

## PROCEDURES FOR MEDICAL EVALUATION



**Work with agents that require initial medical surveillance must not begin until Physician's approval is received by Environmental Health & Safety.**

**MSP PROCEDURES FOR MEDICAL EVALUATION OF EMPLOYEE**