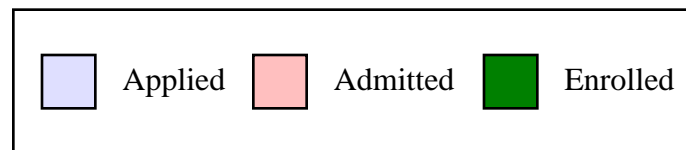
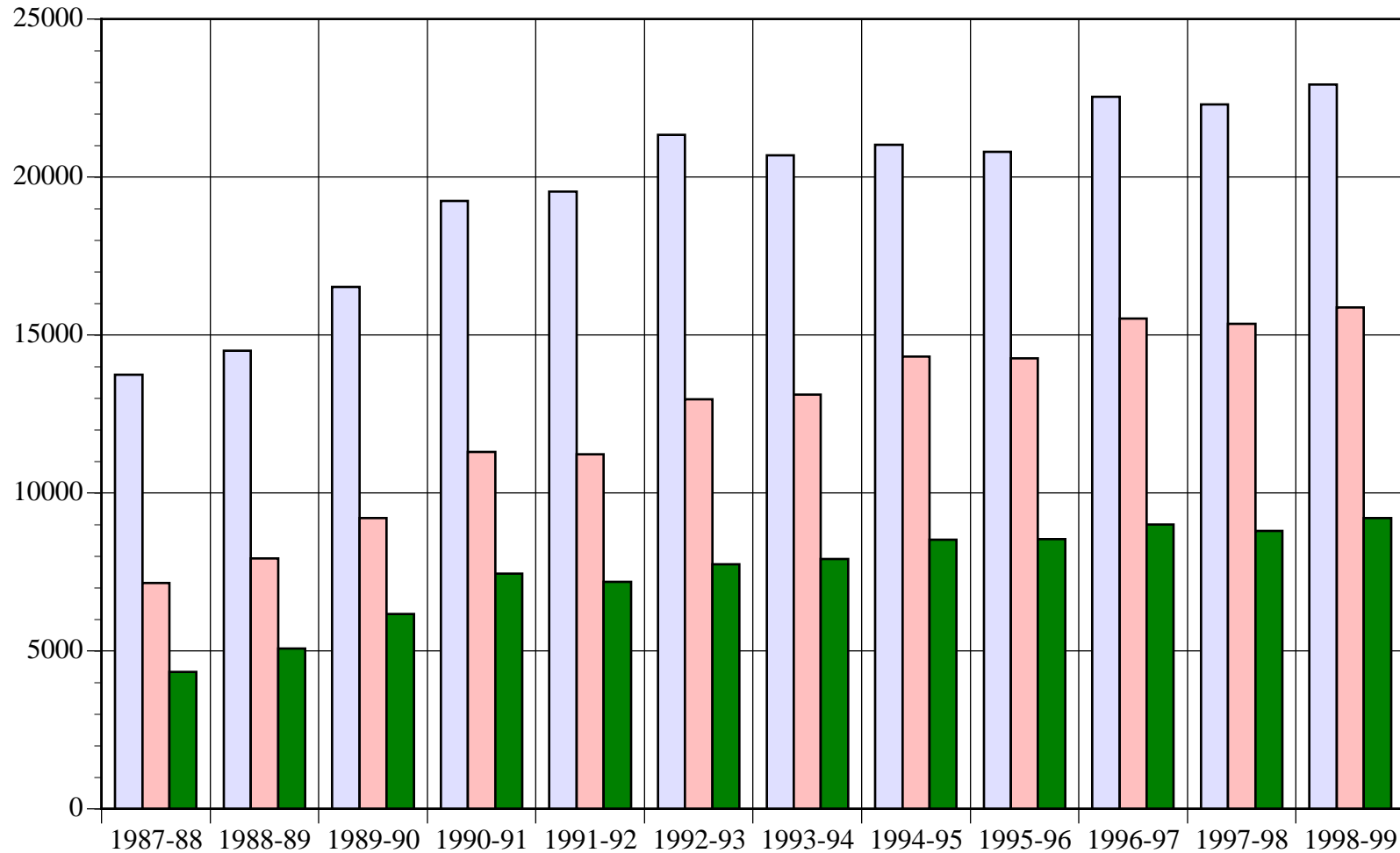


# Florida International University

## All Students Applied, Admitted & Enrolled



## Applied, Admitted & Enrolled by Application Type: Whole Years

1991/92 - 1998/99

### First Time in College Students

	Applied	Admitted	Enrolled	% Admitted Who Applied	% Enrolled Who Were Admitted
1998-99	7,657	5,869	2,974	77%	51%
1997-98	6,769	5,006	2,530	74%	51%
1996-97	6,433	4,730	2,370	74%	50%
1995-96	5,719	4,101	2,047	72%	50%
1994-95	5,745	4,431	2,127	77%	48%
1993-94	4,986	3,472	1,662	70%	48%
1992-93	5,039	3,314	1,584	66%	48%
1991-92	4,448	2,579	1,368	58%	53%

### Other Transfers

	Applied	Admitted	Enrolled	% Admitted Who Applied	% Enrolled Who Were Admitted
1998-99	4,257	2,982	1,698	70%	57%
1997-98	4,294	3,033	1,677	71%	55%
1996-97	4,385	3,053	1,648	70%	54%
1995-96	4,145	2,880	1,669	69%	58%
1994-95	4,231	2,677	1,555	63%	58%
1993-94	4,080	2,437	1,458	60%	60%
1992-93	4,095	2,182	1,254	53%	57%
1991-92	4,245	2,191	1,385	52%	63%

### Florida Community College Transfers

	Applied	Admitted	Enrolled	% Admitted Who Applied	% Enrolled Who Were Admitted
1998-99	5,145	4,250	2,726	83%	64%
1997-98	5,414	4,573	2,840	84%	62%
1996-97	5,726	4,806	3,115	84%	65%
1995-96	5,476	4,451	2,995	81%	67%
1994-95	5,720	4,530	3,111	79%	69%
1993-94	6,135	4,555	3,146	74%	69%
1992-93	6,687	4,822	3,304	72%	69%
1991-92	6,020	4,078	3,002	68%	74%

### Graduate Students

	Applied	Admitted	Enrolled	% Admitted Who Applied	% Enrolled Who Were Admitted
1998-99	5,867	2,762	1,803	47%	65%
1997-98	5,816	2,727	1,735	47%	64%
1996-97	5,984	2,926	1,853	49%	63%
1995-96	5,453	2,819	1,816	52%	64%
1994-95	5,321	2,679	1,729	50%	65%
1993-94	5,488	2,647	1,628	48%	62%
1992-93	5,506	2,648	1,589	48%	60%
1991-92	4,828	2,370	1,428	49%	60%

### All Students

	Applied	Admitted	Enrolled	% Admitted Who Applied	% Enrolled Who Were Admitted
1998-99	22,926	15,863	9,201	69%	58%
1997-98	22,293	15,339	8,782	69%	57%
1996-97	22,528	15,515	8,986	69%	58%
1995-96	20,793	14,251	8,527	69%	60%
1994-95	21,017	14,317	8,522	68%	60%
1993-94	20,689	13,111	7,894	63%	60%
1992-93	21,327	12,966	7,731	61%	60%
1991-92	19,541	11,218	7,183	57%	64%

## Fall Community College Transfers By Degree

### Community College Students Transferring into FIU

	Fall 1990	Fall 1991	Fall 1992	Fall 1993	Fall 1994	Fall 1995	Fall 1996	Fall 1997	Fall 1998
Miami Dade Community College	1,077	948	1,409	1,054	1,142	1,134	1,182	1,144	1,051
Transfers w/no Postsecondary Degree	319	262	462	367	454	624	501	434	394
Transfers with AA Degree	736	663	913	653	651	465	631	664	629
Transfers with AS Degree	22	23	34	34	37	45	50	46	28
Broward Community College	167	123	203	147	163	184	157	184	172
Transfers w/no Postsecondary Degree	77	56	93	78	81	120	91	106	80
Transfers with AA Degree	85	60	91	62	70	48	54	65	81
Transfers with AS Degree	5	7	19	7	12	16	12	13	11
Total Florida Public Community College Transfers	1,342	1,151	1,708	1,298	1,387	1,421	1,435	1,432	1,330
Transfers w/no Postsecondary Degree	434	348	595	488	577	799	630	585	516
Transfers with AA Degree	877	770	1,057	762	758	557	740	785	772
Transfers with AS Degree	31	33	56	48	52	65	65	62	42

### Percent of FIU Transfers of those transferring into the SUS

	Fall 1990	Fall 1991	Fall 1992	Fall 1993	Fall 1994	Fall 1995	Fall 1996	Fall 1997	Fall 1998
Miami Dade Community College	72.2%	70.3%	77.8%	69.9%	71.7%	71.7%	72.7%	70.4%	64.7%
Transfers w/no Postsecondary Degree	73.5%	75.3%	77.9%	70.4%	72.2%	79.3%	73.6%	63.7%	57.9%
Transfers with AA Degree	71.3%	68.1%	77.2%	69.0%	70.4%	62.7%	71.1%	74.8%	70.8%
Transfers with AS Degree	88.0%	82.1%	94.4%	85.0%	94.9%	84.9%	89.3%	82.1%	50.0%
Broward Community College	19.5%	16.5%	21.3%	17.1%	16.9%	19.7%	16.6%	19.5%	18.2%
Transfers w/no Postsecondary Degree	22.9%	16.8%	20.0%	17.7%	15.1%	23.3%	17.4%	20.3%	15.3%
Transfers with AA Degree	16.9%	15.2%	20.1%	15.1%	17.0%	12.4%	13.3%	16.0%	20.0%
Transfers with AS Degree	29.4%	46.7%	55.9%	70.0%	75.0%	48.5%	66.7%	72.2%	61.1%
Total Florida Public Community College Transfers	12.2%	10.3%	12.2%	10.0%	10.3%	10.5%	10.4%	10.4%	9.7%
Transfers w/no Postsecondary Degree	12.7%	11.3%	13.4%	10.7%	11.0%	15.0%	12.6%	11.7%	10.3%
Transfers with AA Degree	11.8%	9.7%	11.3%	9.2%	9.4%	7.1%	8.7%	9.2%	9.1%
Transfers with AS Degree	16.8%	14.0%	24.7%	24.6%	26.4%	16.5%	25.2%	24.0%	16.3%

For example, the 1,409 students who transferred from Miami Dade Community College to FIU in Fall 1992 represented 77.8% of all MDCC transfers into the SUS in that term.

Source: SDCF & SUS Factbook

## FIU's Share of Students Entering the SUS

### First Time in College (FTIC)

		Fall 1993	Fall 1994	Fall 1995	Fall 1996	Fall 1997	Fall 1998
<b>FIU</b>	<b>Applied</b>	3,306	4,032	3,786	3,846	3,566	4,007
	<b>Admitted</b>	2,271	3,156	2,469	2,463	2,188	2,684
	<b>Enrolled</b>	1,071	1,395	1,166	1,157	1,058	1,301
<b>Percent of SUS</b>	<b>Applied</b>	8.89%	10.19%	9.12%	8.97%	7.91%	8.58%
	<b>Admitted</b>	8.25%	10.57%	8.08%	7.95%	6.60%	7.61%
	<b>Enrolled</b>	7.23%	8.89%	7.34%	7.11%	5.91%	6.48%

### Community College Transfers

		Fall 1993	Fall 1994	Fall 1995	Fall 1996	Fall 1997
<b>FIU</b>	<b>Applied</b>	2,858	2,769	2,630	2,834	2,588
	<b>Admitted</b>	2,141	2,257	2,190	2,361	2,213
	<b>Enrolled</b>	1,514	1,600	1,581	1,602	1,470
<b>Percent of SUS</b>	<b>Applied</b>	14.52%	14.13%	13.56%	14.56%	13.43%
	<b>Admitted</b>	13.01%	13.61%	13.28%	14.27%	13.28%
	<b>Enrolled</b>	11.94%	12.51%	12.28%	12.57%	11.25%

### Other Undergraduate Transfers

		Fall 1993	Fall 1994	Fall 1995	Fall 1996	Fall 1997	Fall 1998
<b>FIU</b>	<b>Applied</b>	2,040	2,071	2,041	2,242	2,246	2,192
	<b>Admitted</b>	1,265	1,371	1,456	1,566	1,607	1,585
	<b>Enrolled</b>	757	810	875	876	921	926
<b>Percent of SUS</b>	<b>Applied</b>	13.40%	12.57%	13.58%	14.82%	13.86%	14.31%
	<b>Admitted</b>	13.45%	13.04%	15.05%	15.89%	14.84%	15.50%
	<b>Enrolled</b>	13.69%	12.87%	14.98%	14.78%	13.95%	15.01%

### Graduate Students

		Fall 1993	Fall 1994	Fall 1995	Fall 1996	Fall 1997
<b>FIU</b>	<b>Applied</b>	2,689	2,607	2,871	2,871	2,962
	<b>Admitted</b>	1,240	1,250	1,506	1,506	1,310
	<b>Enrolled</b>	741	805	957	957	788
<b>Percent of SUS</b>	<b>Applied</b>	10.85%	10.42%	11.45%	11.23%	11.36%
	<b>Admitted</b>	9.60%	9.68%	11.61%	11.59%	10.25%
	<b>Enrolled</b>	10.44%	10.80%	12.62%	12.98%	10.60%

### Total Students

		Fall 1993	Fall 1994	Fall 1995	Fall 1996	Fall 1997	Fall 1998
<b>FIU</b>	<b>Applied</b>	10,893	11,479	11,328	11,899	11,362	11,830
	<b>Admitted</b>	6,917	8,034	7,621	7,869	7,318	7,759
	<b>Enrolled</b>	4,083	4,610	4,579	4,546	4,237	4,476
<b>Percent of SUS</b>	<b>Applied</b>	10.48%	10.63%	10.47%	10.81%	10.02%	10.36%
	<b>Admitted</b>	10.09%	11.10%	10.55%	10.77%	9.63%	9.91%
	<b>Enrolled</b>	9.87%	10.57%	10.49%	10.37%	9.11%	9.23%

Source: BOR SUS Admissions Master File

## Fall 1999 Enrollment By Florida County at time of Application

<b>County</b>	<b>Number</b>	<b>County</b>	<b>Number</b>
Alachua	58	Marion	5
Bay	1	Martin	13
Brevard	32	Monroe	83
Broward	3,344	Nassau	2
Charlotte	9	Okaloosa	2
Citrus	4	Okeechobee	3
Clay	2	Orange	98
Collier	25	Osceola	17
Columbia	1	Palm Beach	311
Dade	23,113	Pasco	10
DeSoto	2	Pinellas	48
Duval	34	Polk	14
Escambia	7	Santa Rosa	0
Flagler	1	Sarasota	19
Gadsden	2	Seminole	28
Gulf	1	St. Johns	6
Hardee	1	St. Lucie	15
Hendry	10	Sumter	0
Highlands	2	Suwannee	0
Hillsborough	61	Volusia	38
Indian	6	Wakulla	1
Jack	1	<b>Total Florida</b>	<b>27,514</b>
Lake	7		
Lee	40	Other	363
Leon	29	NonRes Aliens	2381
Levy	0	Non USA	250
Madison	0	Non-Florida	766
Manatee	8	<b>Total</b>	<b>31,274</b>

Source: Fall 99 Mid Term Profile

## Fall 1999 Enrollment By State of Origin at time of application

<b>State</b>	<b>Count</b>	<b>State</b>	<b>Count</b>
Alabama	8	New Hampshire	11
Alaska	0	New Jersey	69
Arizona	3	New Mexico	2
Arkansas	2	New York	173
California	53	North Carolina	15
Colorado	15	North Dakota	1
Connecticut	26	Ohio	24
D.C.	10	Oklahoma	3
Delaware	6	Oregon	7
Florida	27,544	Pennsylvania	36
Georgia	25	Rhode Island	6
Hawaii	1	South Carolina	7
Idaho	1	South Dakota	0
Illinois	32	Tennessee	10
Indiana	5	Texas	33
Iowa	5	Utah	4
Kansas	6	Vermont	3
Kentucky	6	Virginia	28
Louisiana	12	Washington	9
Maine	7	West Virginia	2
Maryland	24	Wisconsin	11
Massachusetts	25	Wyoming	0
Michigan	9	<b>Total States</b>	<b>28,312</b>
Minnesota	5		
Mississippi	3		
Missouri	15		
Montana	1	NR Aliens	2,381
Nebraska	2	Not given	581
Nevada	7	<b>Total</b>	<b>31,274</b>

Source: Fall 99 Midterm Profile

## SAT/eAct/GPA/GRE Score Distribution of Admitted & Enrolled Students

### SAT of FTICs

Term	Mean	Mid-50 Range	# of Students
Fall 1993	1012	920 – 1080	899
Fall 1994	981	890 – 1070	1107
Fall 1995	1007	920 – 1080	964
Fall 1996	1087	1020 – 1140	1008
Fall 1997	1123	1060 – 1180	868
Fall 1998	1105	1040 – 1150	1123
Fall 1999	1112	1050 – 1160	1349

### eAct of FTICs

Term	Mean	Mid-50 Range	# of Students
Fall 1993	23.58	21 – 25	386
Fall 1994	22.59	20 – 25	577
Fall 1995	22.89	21 – 25	480
Fall 1996	22.53	21 – 24	480
Fall 1997	23.28	22 – 25	520
Fall 1998	23.65	22 – 25	540
Fall 1999	23.58	22 – 25	672

### High School Grade Point Average of FTICs

Term	Mean	Mid-50 Range	# of Students
Fall 1993	3.34	3.00 – 3.70	1066
Fall 1994	3.26	2.90 – 3.61	1377
Fall 1995	3.32	3.00 – 3.63	1156
Fall 1996	3.32	3.00 – 3.70	1157
Fall 1997	3.40	3.00 – 3.80	1058
Fall 1998	3.45	3.10 – 3.80	1301
Fall 1999	3.47	3.11 – 3.80	1516

### GRE of Graduate Students

Term	Mean	Mid-50 Range	# of Students
Fall 1993	979	850 – 1100	438
Fall 1994	975	820 – 1110	515
Fall 1995	971	840 – 1100	568
Fall 1996	951	815 – 1080	534
Fall 1997	1004	870 – 1130	470
Fall 1998	999	870 – 1120	502
Fall 1999	971	820 – 1090	516

Source: FIU BOR Admissions Files

**Florida High Schools providing Ten or More  
Enrolled Students during Fall 1998  
(Classified as FTIC when Admitted)**

Count	Name	Count	Name	Count	Name
489	G HOLMES BRADDOCK	65	GULLIVER ACADEMY	25	SCHOOL FOR ADVANCED
369	ST BRENDAN HIGH SCH	64	COOPER CITY HIGH SCH	25	SOUTH BROWARD HIGH S
347	MIAMI SUNSET SENIOR	64	MAST ACADEMY	22	DILLARD H S
333	MIAMI CORAL PARK H S	63	FLORIDA CHRIST SCH	22	PIPER H S
312	CORAL GABLES SENIOR	59	MIRAMAR H S	20	HOLY CROSS ACADEMY
285	OUR LADY OF LOURDES	58	MIAMI NORLAND SR HS	20	PALMER PREP SCHOOL
282	CHRIS COLUMBUS H S	56	DADE CHRISTIAN SCH	18	MIAMI COUNTRY DAY SC
271	MIAMI KILLIAN H S	47	ARCHBISHOP CURLEY HS	18	NOVA SR H S
247	NORTH MIAMI BEACH SE	46	SOUTH DADE SR H S	17	JEWISH HIGH SCH SOUT
199	MIAMI PALMETTO H S	44	MIA NORTHWESTERN SR	17	ST THOMAS AQUINAS HS
198	SOUTHWEST MIAMI H S	40	HOMESTEAD SR H S	16	HOLLYWOOD HILLS HIGH
187	HIALEAH SENIOR HIGH	40	WESTWOOD CHRISTIAN S	16	MARJORY STONEMAN
171	AMERICAN SENIOR H S	39	MIAMI CHRISTIAN SCH	16	SO PLANTATION H S
159	MONSIGNOR E PACE H S	37	STRANAHAN H S	15	TARAVELLA, J. P. HIG
144	MIAMI SPRINGS SR H S	34	NEW WORLD SCH. ARTS	14	CHAMPAGNAT CATHOLIC
140	S MIAMI SR H S	33	WESTMINSTER CHRIST	14	NORTHWEST CHRSTN AC
139	HIALEAH-MIAMI LKS HS	32	MIAMI CAROL CITY H S	14	PROGRESIVA PRSBYTN S
139	NORTH MIAMI H S	31	FIRST BAPTIST SCHOOL	13	ELY HIGH SCHOOL
134	BELEN JESUIT PREP S	31	PLANTATION HIGH SCHO	13	FT LAUDERDALE H S
134	MIAMI SOUTHRIDGE SR	30	CARROLLTON SCHOOL	12	CORAL SPRINGS H S
132	IMMACULATA-LASALLE	29	BOYD ANDERSON H S	11	COCONUT CREEK HS
112	MIAMI BCH H S	29	HALLANDALE HIGH SCH	10	ST. ANDREWS
112	WESTERN HIGH SCHOOL	28	MIAMI EDISON H S		
108	MIAMI H S	28	MIAMI JACKSON H S		
67	CHAMINADE-MADONNA CG	25	MCARTHUR H S		