

1999-2000 Budget By Budget Entity

Budget Entity	Amount	% of Total
Education & General	\$213,828,437	62.8%
Auxiliary Enterprises	\$40,542,715	11.9%
Sponsored Research	\$47,567,569	14.0%
Student Activities	\$3,634,095	1.1%
Intercollegiate Athletics	\$4,428,259	1.3%
Concessions	\$340,500	0.1%
Student Financial Aid	\$30,420,000	8.9%
University Total	\$340,761,575	100.00%

1999-2000 Education & General (E&G) Budget By Category

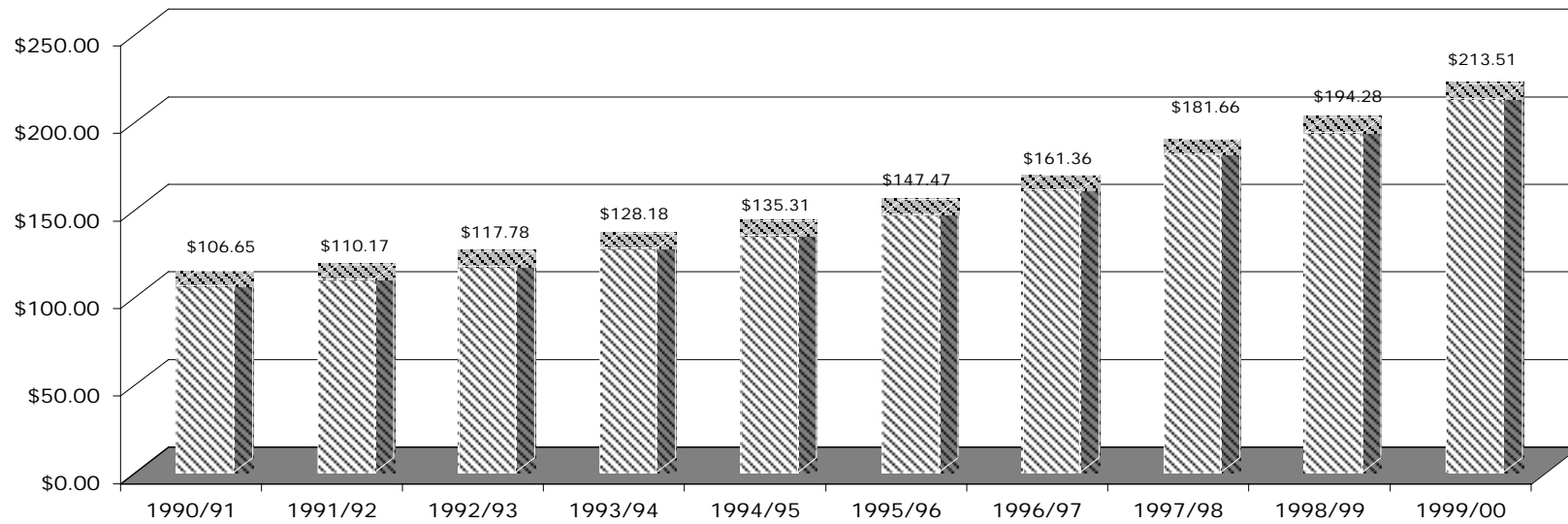
Category	Amount	% of Total
Salaries & Benefits	\$166,139,859	77.70%
Other Personal Services	\$7,094,926	3.32%
Expense	\$22,024,063	10.30%
Other Capital Outlay	\$3,704,572	1.73%
Library Resources	\$4,152,186	1.94%
Data Processing Services	\$1,550,488	0.73%
Student Financial Aid Special	\$6,126,235	2.87%
Plant Maintenance	\$1,347,965	0.63%
Risk Management Insurance	\$1,612,359	0.75%
Salary Incentive Payments	\$25,784	0.01%
Scholarships	\$50,000	0.02%
E & G Total	\$213,828,437	100.00%

Source: 1999-2000 Operating Budget Summary

E & G Expenditures By Budget Year (In Millions)

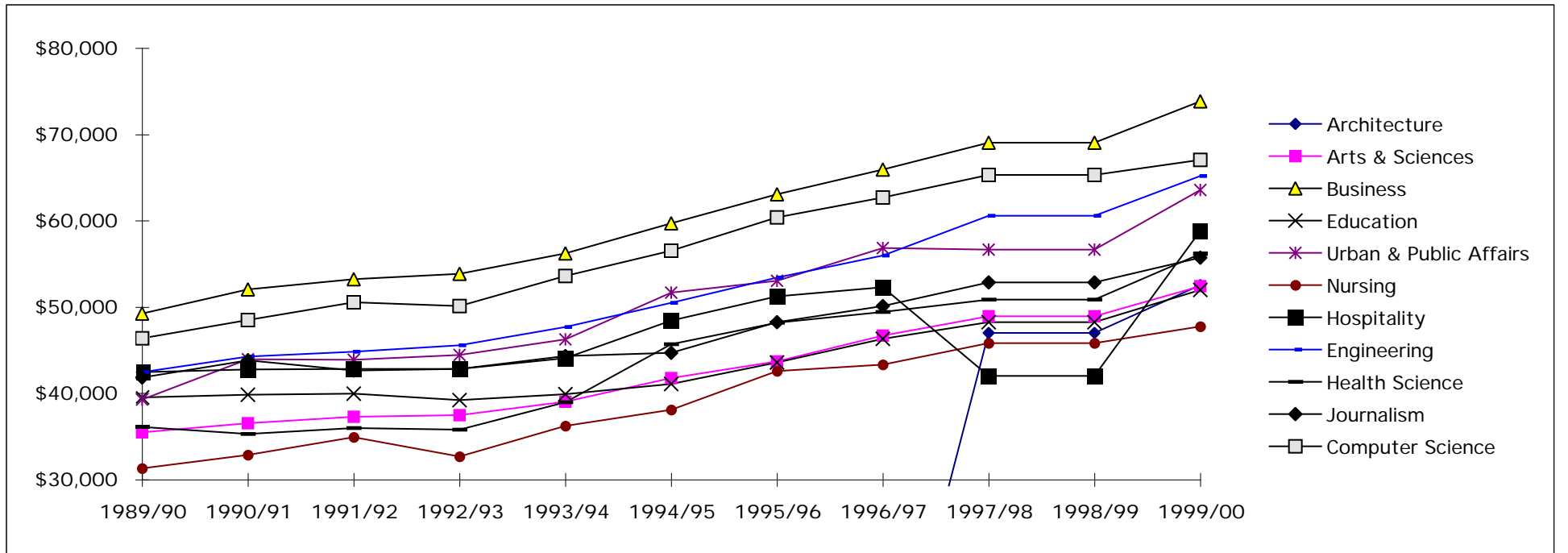
	1990/91	1991/92	1992/93	1993/94	1994/95	1995/96	1996/97	1997/98	1998/99	1999/00
F. I. U.	\$106.65	\$110.17	\$117.78	\$128.18	\$135.31	\$147.47	\$161.36	\$181.66	\$194.28	\$213.51
Total SUS	\$1,038.35	\$1,041.54	\$1,087.47	\$1,160.36	\$1,172.04	\$1,268.47	\$1,347.00	\$1,504.47	\$1,672.37	\$1,855.60
Percent of SUS	10.27%	10.58%	10.83%	11.05%	11.54%	11.63%	11.98%	12.07%	11.62%	11.51%

E & G Expenditures
By Budget Year
(In Millions)



9-Month Faculty Average Rate Per Person Year for the Academic Year

	1989/90	1990/91	1991/92	1992/93	1993/94	1994/95	1995/96	1996/97	1997/98	1998/99	1999/00
Architecture	\$0	\$0	\$0	\$0	\$0	\$0	\$0	\$0	\$47,006	\$47,006	\$52,555
Arts & Sciences	\$35,449	\$36,536	\$37,256	\$37,470	\$39,034	\$41,747	\$43,702	\$46,672	\$48,907	\$48,907	\$52,402
Business	\$49,225	\$52,027	\$53,230	\$53,879	\$56,219	\$59,707	\$63,041	\$65,908	\$69,055	\$69,055	\$73,815
Education	\$39,524	\$39,846	\$39,986	\$39,237	\$39,926	\$41,075	\$43,590	\$46,342	\$48,239	\$48,239	\$51,982
Urban & Public Affairs	\$39,267	\$43,925	\$43,898	\$44,448	\$46,225	\$51,659	\$53,050	\$56,833	\$56,644	\$56,644	\$63,542
Nursing	\$31,286	\$32,877	\$34,948	\$32,672	\$36,208	\$38,118	\$42,575	\$43,324	\$45,836	\$45,836	\$47,717
Hospitality	\$42,452	\$42,755	\$42,826	\$42,821	\$44,081	\$48,444	\$51,239	\$52,304	\$42,012	\$42,012	\$58,825
Engineering	\$42,449	\$44,255	\$44,815	\$45,574	\$47,657	\$50,478	\$53,435	\$55,957	\$60,573	\$60,573	\$65,197
Health Science	\$36,092	\$35,281	\$35,981	\$35,798	\$38,974	\$45,713	\$48,181	\$49,437	\$50,854	\$50,854	\$56,132
Journalism	\$41,814	\$43,807	\$42,617	\$42,823	\$44,307	\$44,712	\$48,248	\$50,103	\$52,854	\$52,854	\$55,703
Computer Science	\$46,350	\$48,472	\$50,536	\$50,114	\$53,612	\$56,535	\$60,374	\$62,667	\$65,287	\$65,287	\$67,078
University Wide Rate	\$39,776	\$41,163	\$41,747	\$41,846	\$43,529	\$46,479	\$48,868	\$51,583	\$53,133	\$53,133	\$57,100



Source: 1999/2000 Budget